



NOTICE OF RACE

Open Dutch Championship

J/80 class

organised by **R&ZV Naarden**

under the auspices of the RNWA

from 4 April 2025 to 6 April (inclusive) 2025

location: Gooimeer and Markermeer, Naarden, The Netherlands

The notation '[NP]' in a rule means that a boat may not protest another boat for breaking that rule. This changes RRS 60.1(a). The notation '[DP]' in a rule means that the protest committee, when violated this may determine an appropriate penalty.

1 RULES

- 1.1*** The event is governed by the rules as defined in *The Racing Rules of Sailing (RRS)*. The Prescriptions of the RNWA can be found at <https://www.sailing.org/inside-world-sailing/rules-regulations/racingrules/>
- 1.2*** The 'Rules for (Open) Championships Sailing, Windsurfing and Kiteboarding' (available at <https://www.watersportverbond.nl/media/rmxdy253/reglement-voor-kampioenschappen-20230221-v7.pdf>) will apply.
- 1.3** Racing rule(s) 44.1 will be changed .as follows: See 14.1. The changes will appear in full in the sailing instructions. The sailing instructions may change other rules as well
- 1.4** Spare
- 1.5** If there is a conflict between languages the text in the English language will take precedence.
- 1.6*** Every person on board who has his domicile in the Netherlands shall have the appropriate license.
- 1.7** The AVG declaration which can be found on the website www.rzvnaarden.nl.

2 SAILING INSTRUCTIONS

- 2.1** The sailing instructions will be available after 15 March 2025 on www.rzvnaarden.nl. No hard copy will be handed out at registration.

3 COMMUNICATION

- 3.1** The online official notice board is located at www.rzvnaarden.nl
- 3.2** [DP] All boats shall carry a VHF radio capable of communicating on channel stated in the Si's.
- 3.3** [DP]On the water, the race committee will make courtesy broadcasts to competitors on VHF radio. The channel will be stated in the Si's.
- 3.4** [DP] While racing, except in an emergency, a boat shall not make voice or data transmissions and shall not receive voice or data communication that is not available to all boats.

4* ELIGIBILITY AND ENTRY



4.1 The event is open to all boats of the J/80 class.

4.2 Spare

4.3 Class are defined as follows:

J/80	Members of the J/80 Class as defined by the J/80 Class Rule c3.3
------	--

4.4 Boats may enter the event by registering online before 25 March 2025 at www.rzvnaarden.nl. The required fee shall be transferred to the following bank account: IBAN NL73RABO 0372 227 899, to the attention of R&ZV Naarden. Please state boat name, sail number and ONK 2024.

4.5 To be considered an entry in the event, a boat shall complete all registration requirements and pay all fees.

4.6 Late entries will be accepted. See NOR 5.1.

5 FEES

5.1 Entry fees are as follows:

Class	Standard Entry Fee until 25 March 2025	Late Entry Fee
J/80	Euro 250	Euro 275

The entry fee covers

- *Berth in Marina Jachthaven Naarden*
- *Storage of trailer*
- *Car parking unlimited per boat*

5.2 Other fees during the event as from 4 April through 6 April 2025:

Boat lift 2x	Euro 140,00
Mast crane 2x	Euro 80,00
Camper Parking	Euro 22,00 and tax 1,89 pp per night
Tent per 2 persons	Euro 16,50 and tax 1,89 pp per night

These fees are due to the harbour / Jachthaven Naarden,

6 CREW LIMITATIONS

6.1 Spare

7 ADVERTISING

7.1 Boats shall be required to display advertising chosen and supplied by the organizing authority.

7.2 The organizing authority may provide bibs that competitors are required to wear as permitted by the World Sailing Advertising Code.

8 QUALIFYING SERIES AND FINAL SERIES

8.1 Spare



9 SCHEDULE

9.1 Registration:

Date	From	To
Thursday 3 April 2025	17.00 hrs	22.00 hrs
Friday 4 April 2025	09.00 hrs	11.00 hrs

At registration the J/80 owner declaration, completed crew list with license numbers (Dutch residents) will be presented and all crew members will be weighed.

9.2 Equipment inspection and event measurement will take place on Thursday 3 April 2025 (from 09.00 till 18.00 hrs) and on Friday 4 April 2025 (from 09.00 till 11.00 hrs).

9.3* Dates of racing:

Date	J/80
Friday 4 April	racing
Saturday 5 April	racing
Sunday 6 April	racing

9.4 Number of races:

Date	Class	Races per day Scheduled	Races per day Maximum
4 April	J/80	3	4
5 April	J/80	4	5
6 April	J/80	4	5

9.5* The scheduled time of the warning signal for the first race on 4 April 2025 is 12.55 hrs. On 5 and 6 April the scheduled time of the warning signal for the first race of the day is 10.25 hrs.

9.6* On the last day of the regatta no warning signal will be made after 15.00 hrs.

10 EQUIPMENT INSPECTION

10.1* Each boat shall produce or verify a valid owners declaration.

10.2 [DP] Boats shall be available for equipment inspection at the end of each racing day.

10.3 Boats may be inspected at any time.

10.4 The following equipment [mentioned in the appendix] will be inspected or measured.

10.5 [DP] Boats shall also comply with RRS 78.1 during the event and on the date of inspection.

11 CLOTHING AND EQUIPMENT

not applicable

12 VENUE

12.1 The race office is located at the following address R&ZV Naarden, Onderwal 10a, 1411 LV, Naarden, The Netherlands.



12.2 NoR Addendum A shows the plan of the event venue.

12.3 NoR Addendum B shows the location of the racing areas.

13 COURSES

13.1 The courses to be sailed will be as follows: Upwind Downwind

14 PENALTY SYSTEM

14.1 For the J/80 class RRS 44.1 is changed to “A boat may take a One-Turn Penalty when she may have broken one or more rules of Part 2 while racing, except that when she may have broken a rule of Part 2 while in the zone around a mark other than a starting mark, her penalty shall be a Two-Turns Penalty.

15 SCORING

15.1 The scoring system is as follows: Low Point Scoring System

15.2* Four races are required to be completed to constitute a championship.

- 15.3**
- (a) When fewer than 5 races have been completed, a boat's series score will be the total of her race scores.
 - (b) When 5, 6, 7, 8, 9,10 or 11 races have been completed, a boat's series score will be the total of her race scores excluding her worst score.

15.4 Spare

15.5 RRS 90.3(e) applies.

16 [DP] SUPPORT PERSON VESSELS

16.1 Spare

17 CHARTERED OR LOANED BOATS

17.1 A chartered or loaned boat may carry national letters or a sail number in contravention of her class rules, provided that the race committee has approved her sail identification before the first race.

18 [DP] BERTHING

18.1 Boats shall be kept in their assigned places in the harbour.

19 [DP] HAUL-OUT RESTRICTIONS

19.1 Keel boats shall not be hauled out during the regatta except with and according to the terms of prior written permission of the race committee.

20 [DP] DIVING EQUIPMENT AND PLASTIC POOLS



20.1 Underwater breathing apparatus and plastic pools or their equivalent shall not be used around keel boats between the preparatory signal of the first race and the end of the event.

20.2 Keelboats shall not be cleaned below the waterline by any means during the event.

21 Spare

22 RISK STATEMENT

22.1 RRS 3 states: 'The responsibility for a boat's decision to participate in a race or to continue to race is hers alone.' By participating in this event each competitor agrees and acknowledges that sailing is a potentially dangerous activity with inherent risks. These risks include strong winds and rough seas, sudden changes in weather, failure of equipment, boat handling errors, poor seamanship by other boats, loss of balance on an unstable platform and fatigue resulting in increased risk of injury. Inherent in the sport of sailing is the risk of permanent, catastrophic injury or death by drowning, trauma, hypothermia or other causes.

22.2 The organizing authority will not accept any liability for material damage or personal injury or death sustained in conjunction with or prior to, during, or after the regatta.

23 INSURANCE

23.1 Each participating boat shall be insured with valid third-party liability insurance with a minimum cover of Euro 1.500.000 or the equivalent per incident.

24* PRIZES

24.1 The RNWA supplies for the winning boat or team a blue pennant and a medal for every member of the crew of the first three boats or crews (there will be no extra medals available for changes in the crew during the event).

25 FURTHER INFORMATION

25.1 For further information please contact Bernard Holsboer +31 6 123 95 264.

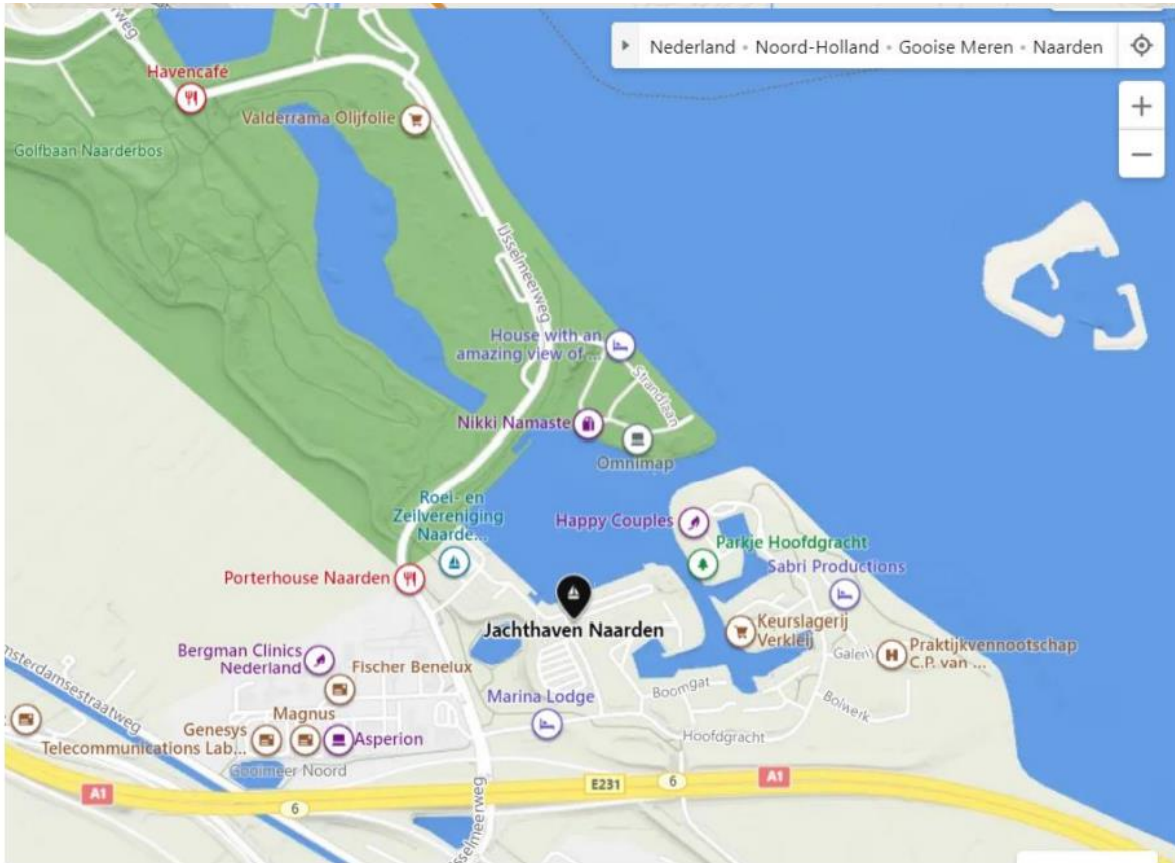
Addendum A: the map of the event venue

Addendum B: the location of the racing area

Addendum C: the courses

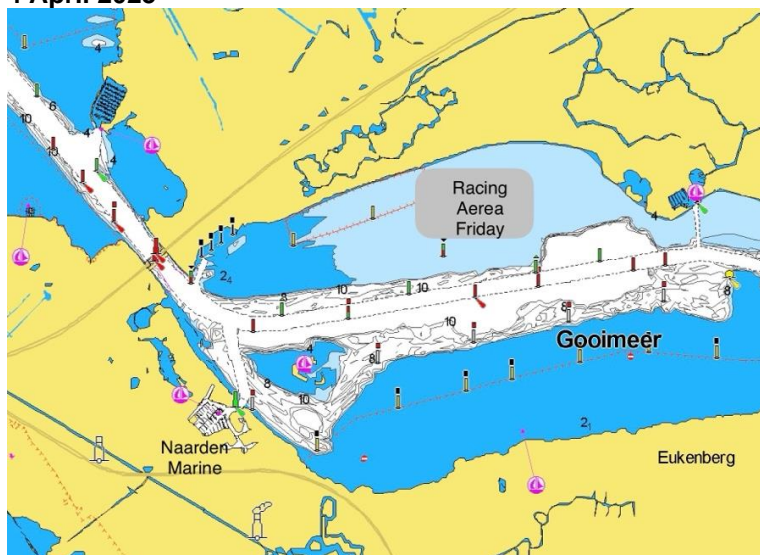
Addendum D: equipment list

Appendix A: the map of the event venue

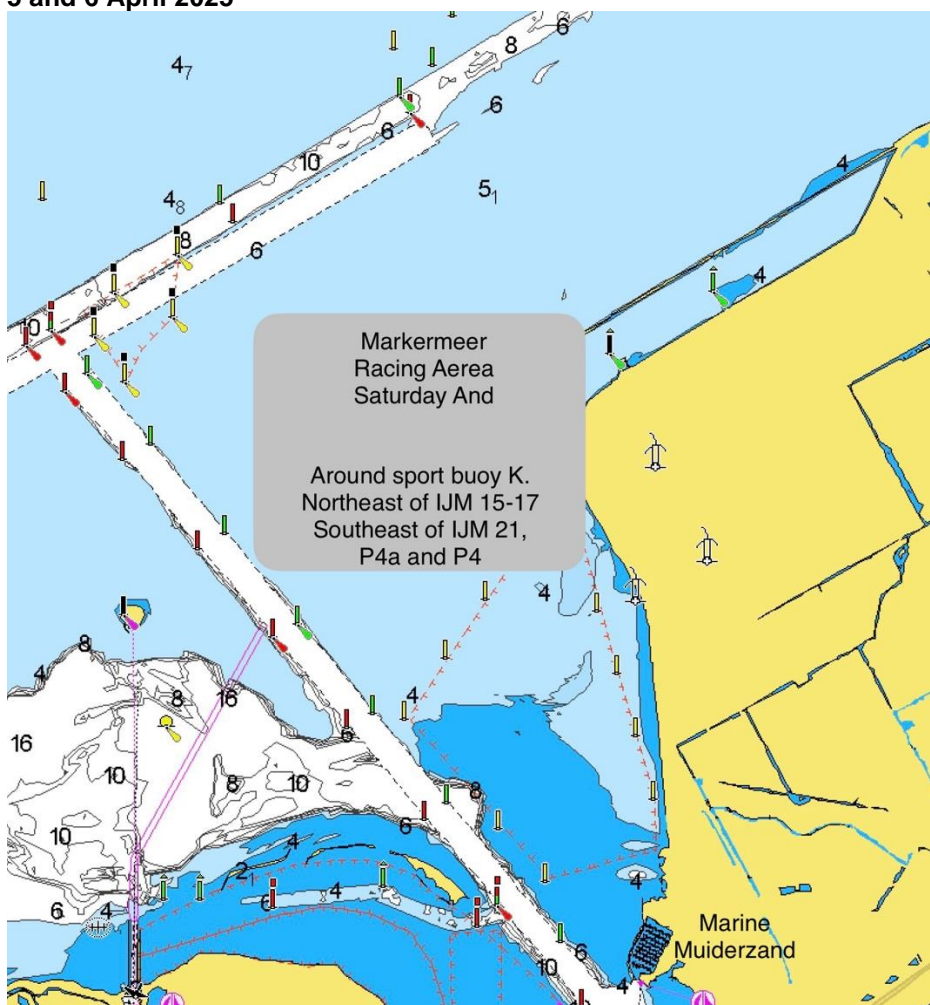


Appendix B: Location of racing Areas

4 April 2025



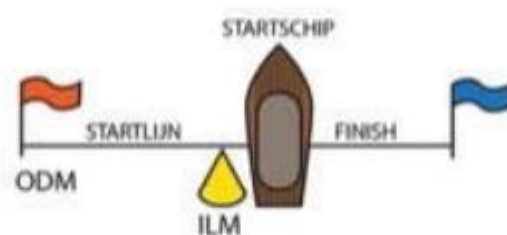
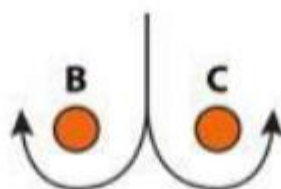
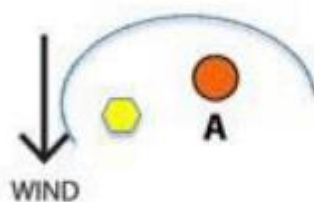
5 and 6 April 2025



Appendix C: the Courses

Upwind- Downwind

- 1 Start - A - Spreader - Finish
- 2 Start - A - Spreader - Gate - A - Spreader - Finish
- 3 Start - A - Spreader - Gate - A - Spreader - Gate - A - Spreader - Finish
- 4 Start - A - Spreader - Gate - A - Spreader - Gate - A - Spreader - Gate - A - Spreader - Gate - A - Spreader - Finish
- 5 Etc



Schematic display



Appendix D Equipment list

The following equipment is on board (Dutch words for reference only, English is binding):

- One anchor and chain exceeding 6.0 kg with 25 meter of polyamide rope with minimum diameter of 8 mm (anker van min. 6 kg, met min. 25 meter lijn)
- One manual bilge pump (handlenspomp)
- One compass (kompas)
- Applicable charts (toepasselijke hydrografische kaart), and either: Speed and depth measuring devices (snelheids- en dieptemeter), or Operational GPS (gps)
- Permanently mounted operable navigation lights (werkende navigatieverlichting)
- One horseshoe type throwable life ring (reddingsboei in hoefijzer vorm)
- Marine first aid kit and manual (EHBO kit)
- One bucket of no less than 9 liter capacity (puts van min. 9 liter)
- Companionway ladder/step (bank / trapje)
- Companionway drop board (ingangsluik)
- Floorboard (vloer)
- Bunk top covers (panelen naast de mast)
- The guard wire (relingdraden) shall not deflect more than 50mm with a force of 5 kg
- Mast band distance (P-maat) max. 9144 mm
- Boom band distance (E-maat) max. 3810 mm
- ICA royalty label mainsail (sailtags)
- ICA royalty label headsail (sailtags)
- ICA royalty label gennaker (sailtags)
- Engine (motor):
Engine Manufacturer: _____
Engine Weight: _____ (min. 12,5 kg)



Engine Horsepower: _____

- Battery (accu):

Battery Manufacturer: _____

Battery Weight: _____ (min. 2 kg)

Battery Capacity: _____

- Personal flotation vests (reddingsvesten) for each crewmember